

Features

- RJ45 Port standard
- Full shielding design
- Frequency width
- Small insertion loss
- 35 mm rail installation
- Protect RJ45 port and 220 VAC/DC power

Discription

According to IEC and GB standard , SPD can release high voltage pulse energy, and limit surge in a safety voltage level. It is suitable for LPZ0_B ~ LPZ2 area and higher.

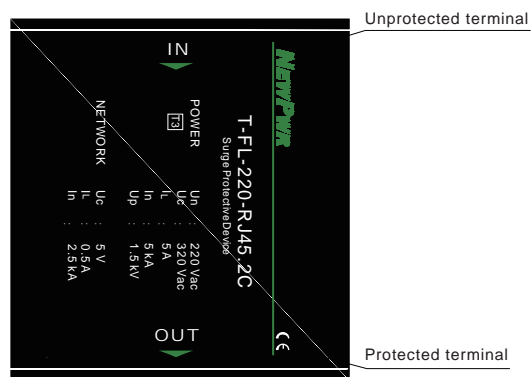
Parameter

Nominal voltage Un	Network: 5 VDC Power: 220 VAC
Max. continuous operating voltage Uc	Network: 5 VDC Power: 320 VAC
Nominal current I _n	Network: 500 mA Power: 5 A
Lightning impulse current I _{imp} (10/350 μs),D1	Network: 0.5 kA, Power: 1 kA
Max. discharge current I _{max} (8/20 μs),C2	20 kA
Nominal discharge current I _n (8/20 μs),C2	Network: 2.5 kA, Power: 5 kA
Voltage protection level U _p (8/20 μs),C2	Networks ≤ 35V(L-L)/600V(L-PE) Power < 1500 V
Bandwidth f _G	100 MHz
Response time T _a	< 1 ns
General parameters	
Operating temperature	-40 °C ~ +80 °C
Installation	35 mm DIN
Interface mode	RJ45/terminal
Material	Metal aluminum
Color	Black
Protection degree	IP20
Standards	IEC 61643-21/ GB/T 18802.21

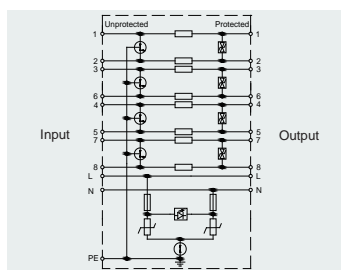


Graphics

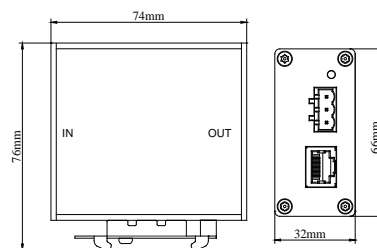
Communication SPD



Schematic



Dimensions



Application

